

3M DI-NOC™ Architectural Finishes

Standard Products

Premium Wood

Dry Wood

Fine Wood

Wood Grain

Metallic Wood

Metal

Leather

Suède

Textile

Stone

Concrete

Mortar

Solid Color

Carbon

Functional Products

Whiteboard Film

Abrasion Resistant

Exterior

2025 // 190 Quick Ship Patterns

Reimagine spaces with material science + design

Deliver design flexibility and peace of mind by designing with industry-leading, science-based solutions. With 3M™ DI-NOC™ Architectural Finishes, you're specifying best-in-class quality, durable surface solutions that are on-trend, and budget-friendly.

Want
Samples?

Material Bank



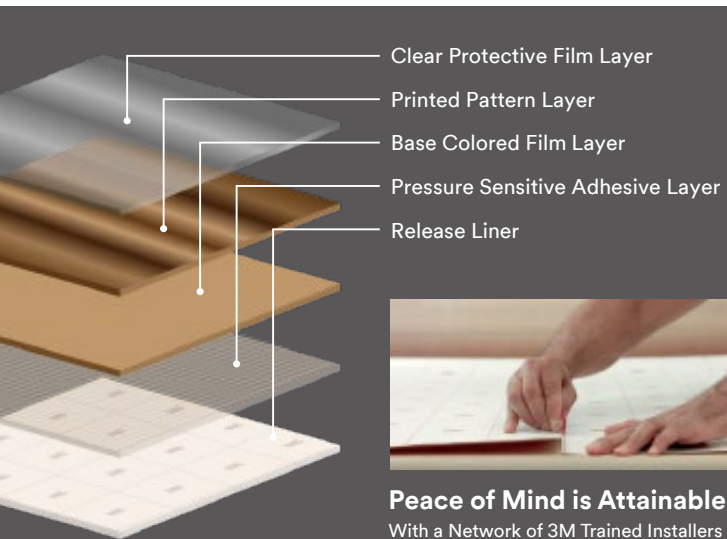
Want
Samples?

3M Site



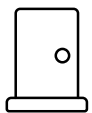
Questions?

www.3M.com/AMD



Top Applications

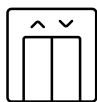
See applications by segment in back of brochure



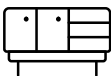
Doors



Walls / Ceiling



Elevators



Millwork /
Built-ins



Restrooms



Exterior Facades

Top Product Benefits



Design Flexibility

Select from 900+ architectural finishes, more than layer, die-cut or customize a variety of films to meet your design needs — the possibilities are endless.



Remodel and Reuse

By refreshing rather than replacing existing surfaces, you can help reduce landfill waste and obtain LEED credits — for beautiful designs you can feel good about.



Quick Installation

Reimagine almost any surface with 3M™ Films installed quickly and easily by certified 3M installers and create less downtime, noise and disruption for your clients.



Cost-effective

3M surface finishes are a cost-effective alternative to traditional construction materials, allowing you to leave your design signature on a project.



Easy to Clean & Maintain

You're designing for durability with surfaces that repair easily and stand up to commonly used cleaners without degradation.



Meet Specifications

We demonstrate our commitment by providing third-party test results when applicable to one of our products.

190 Quick Ship Patterns

These 190, on trend, patterns were selected to have increased inventory in your local market to respond faster to your project needs.*



Order completed
Shipped from
Distributors



Targeted Site Arrival
≤ 5 business days

Contact your local 3M distributor or 3M sales representative to learn more about this program and availability of specific patterns for your project.



Not seeing patterns that work for your project?
There are an additional 700+ patterns.**
Scan the QR code to learn more!

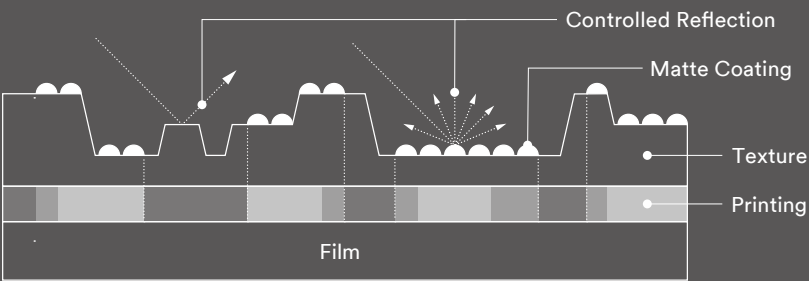
* For projects requiring 5-10 rolls, longer lead times may apply.

* For projects requiring ≥10 rolls, longer lead time will apply.

** Patterns outside the 190 patterns in this brochure will have longer lead times.



Premium Wood - PW



The Premium Wood Series expresses the realistic appearance and texture of natural wood. The controlled reflection of the matte coating technology is combined with both fine and deep wood grain embossing and high-quality printing. This unique technology creates the optimum tone and texture of each species of wood.



PW-2305MT



PW-2306MT



PW-2307MT



PW-2314MT



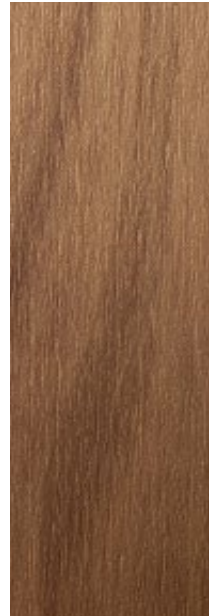
PW-2319MT



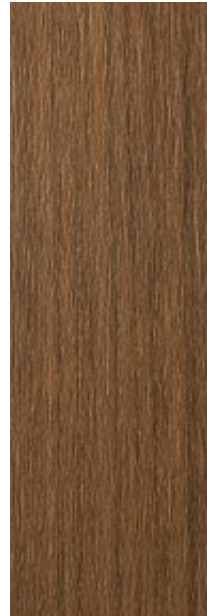
PW-2316MT



PW-2310MT



PW-2312MT



PW-2325MT

Dry Wood - DW



DW-1883MT DW-2202MT DW-2478MT DW-2197MT



DW-1878MT DW-2208MT DW-2203MT DW-2221MT



DW-1877MT DW-1891MT DW-1882MT DW-2229MT

Fine Wood - FW



FW-886 FW-1122
FW-1122AR FW-1122EX
FW-1262 FW-1129
FW-1129AR FW-1129EX FW-1256 FW-1293 FW-237



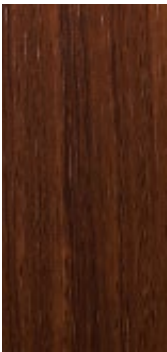
FW-1022
FW-1022AR FW-1022EX FW-1021 FW-1805 FW-1257 FW-1972 FW-1272 FW-236
FW-236AR FW-236EX



FW-1757 FW-627 FW-1801 FW-1113 FW-1215 FW-2421 FW-1138

AR series: for high traffic applications EX series: for exterior applications DO NOT apply to 3D compound curved surfaces

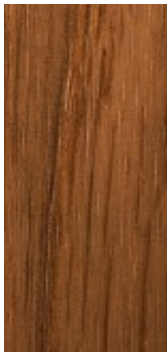
Wood Grain - WG



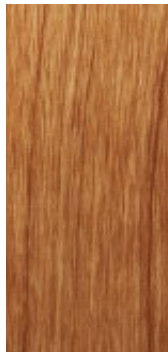
WG-7024



WG-1841



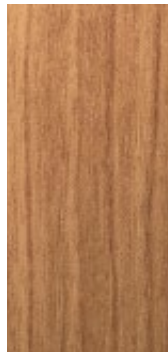
WG-943



WG-865



WG-831



WG-1142



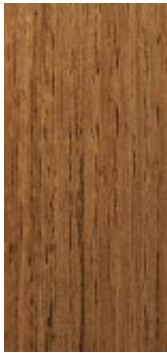
WG-1358



WG-1704



WG-695



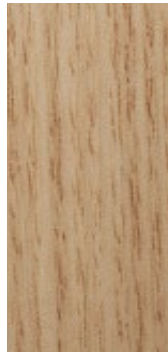
WG-1140
AR WG-1140AR
EX WG-1140EX



WG-1337



WG-1837



WG-1143



WG-1141



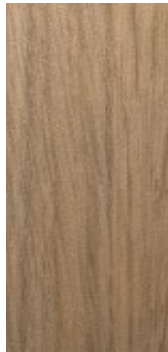
WG-156



WG-1196



WG-1708



WG-1710



WG-1838



WG-1336



WG-1067

Metallic Wood - MW



MW-777



AR series: for high traffic applications EX series: for exterior applications DO NOT apply to 3D compound curved surfaces




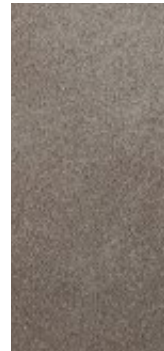


Metal - ME / RT / VM

										
ME-1175	ME-379	ME-1781	ME-396	VM-305 ⊗	ME-1224	ME-1434	ME-1435	ME-1997	ME-1223	ME-486
										
RT-1827	ME-1685	ME-1174	VM-1487 ⊗	VM-1694 ⊗	ME-2173	ME-904	ME-2271	ME-1716	ME-1466	ME-2265
										
ME-2552	RT-1111	VM-2361 ⊗	ME-2564	ME-2262	VM-1691 ⊗	VM-2035 ⊗	ME-2559			

AR series: for high traffic applications EX series: for exterior applications ⊗ DO NOT apply to 3D compound curved surfaces

Metal - ME

Leather/Suède - LE/SU Textile - NU

										
ME-2264	ME-432	ME-2172	ME-2554	LE-1105	LE-1109	LE-1171	NU-1940MT	NU-1786	NU-1789	NU-2009
										
ME-2023	ME-2020	ME-2551	ME-2562	LE-1551	SU-2233MT	SU-2231MT	NU-2008	NU-1935MT	NU-2175MT	NU-2176MT
										
ME-2024	ME-2261						NU-2178	NU-1934MT	NU-2177	

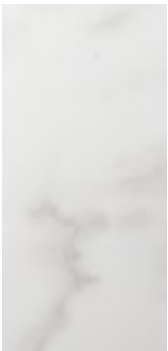
AR series: for high traffic applications EX series: for exterior applications DO NOT apply to 3D compound curved surfaces

Stone - ST

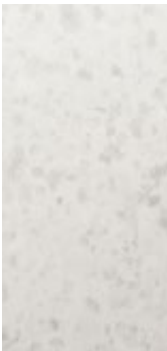
Concrete / Mortar - CN / AE / FA



ST-1831



ST-1914MT



ST-1918MT



CN-1621



CN-1622



CN-1623



AE-2149



AE-1632
■ AE-1632AR
■ AE-1632EX ⊗



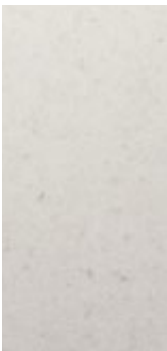
AE-1634



AE-1637



AE-2160



ST-1911MT



ST-2533MT



ST-2170MT



AE-1913MT



AE-1717



AE-1638



AE-2162MT



AE-2503



AE-2163MT



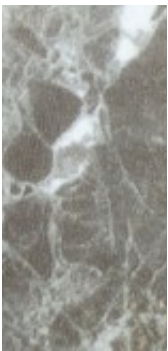
AE-2164MT



AE-2159



ST-2171MT



ST-2536MT



AE-2506



AE-2153MT



AE-1944MT



AE-1921MT



AE-1633



AE-1636



AE-1719



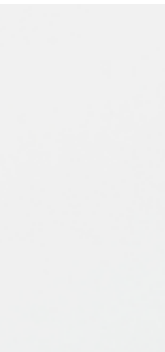
FA-1531

■ AR series: for high traffic applications ■ EX series: for exterior applications ⊗ DO NOT apply to 3D compound curved surfaces

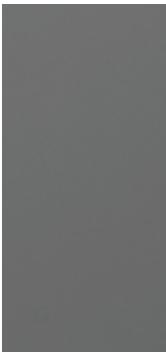
Solid Color - PS / HG

Carbon - CA

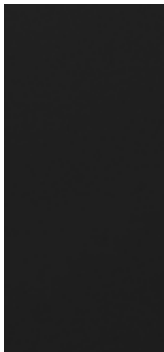
Whiteboard Film - WH



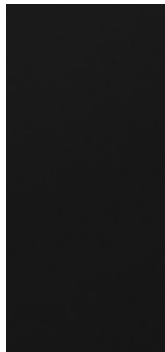
PS-3989MT



PS-3093MT



PS-1183



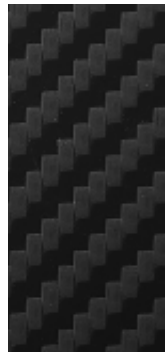
PS-1870MT



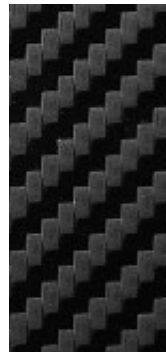
PS-3870MT



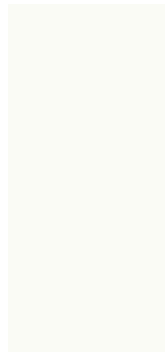
CA-420



CA-421



CA-1170



WH-111

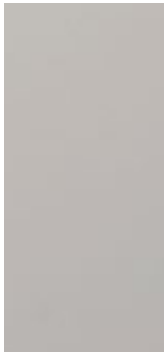
⊗



PS-503



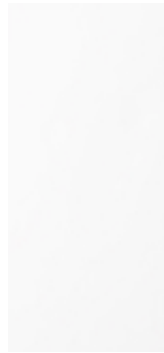
PS-1187



PS-3866MT



PS-3098MT



HG-1205

⊗



■ AR series: for high traffic applications ■ EX series: for exterior applications ⊗ DO NOT apply to 3D compound curved surfaces



PS-3098MT









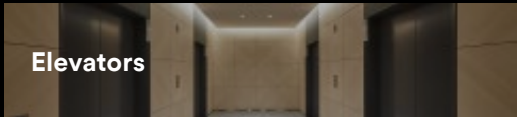


Abrasion Resistant - AR / Exterior - EX

					
<div> <div> </div> <div>FW-236AR</div> </div> <div> <div> </div> <div>FW-236EX</div> </div>	<div> <div> </div> <div>WG-1140EX</div> </div> <div> <div> </div> <div></div> </div>	<div> <div> </div> <div>FW-233EX</div> </div> <div> <div> </div> <div></div> </div>	<div> <div> </div> <div>FW-887EX</div> </div> <div> <div> </div> <div></div> </div>	<div> <div> </div> <div>AE-1632AR</div> </div> <div> <div> </div> <div>AE-1632EX</div> </div>	<div> <div> </div> <div>PS-959EX</div> </div> <div> <div> </div> <div></div> </div>
					
<div> <div> </div> <div>FW-1129AR</div> </div> <div> <div> </div> <div>FW-1129EX</div> </div>	<div> <div> </div> <div>FW-1214EX</div> </div> <div> <div> </div> <div></div> </div>	<div> <div> </div> <div>FW-1122AR</div> </div> <div> <div> </div> <div>FW-1122EX</div> </div>	<div> <div> </div> <div>FW-1022AR</div> </div> <div> <div> </div> <div>FW-1022EX</div> </div>	<div> <div> </div> <div>FA-1530EX</div> </div> <div> <div> </div> <div></div> </div>	<div> <div> </div> <div>AE-1635EX</div> </div> <div> <div> </div> <div></div> </div>
					
<div> <div> </div> <div>ME-004EX</div> </div> <div> <div> </div> <div></div> </div>	<div> <div> </div> <div>ME-001EX</div> </div> <div> <div> </div> <div></div> </div>	<div> <div> </div> <div>ME-002EX</div> </div> <div> <div> </div> <div></div> </div>	<div> <div> </div> <div>ME-003EX</div> </div> <div> <div> </div> <div></div> </div>	<div> <div> </div> <div>ME-007EX</div> </div> <div> <div> </div> <div></div> </div>	<div> <div> </div> <div>ST-442EX</div> </div> <div> <div> </div> <div></div> </div>



Standard and Functional series (AR and EX) have a similar appearance but are not identical. AR series: for high traffic applications EX series: for exterior applications DO NOT apply to 3D compound curved surfaces

Common uses for DI-NOC but not limited to these alone.

	 Retail / Banking	 Hospitality	 Healthcare	 Food Service	 Office
	Fitting Rooms / General	Guest Room / Bathroom / Closets	Guest Room / Bathroom / Hallways	Access / Bathroom	Offices / Bathrooms / Conference Rooms
	Interior Walls / Ceilings / Soffits				
	Cash wraps / Teller counter / ATM	Reception / Closets / Columns	Nurse Station / Cabinets / Closets	Cash Wraps / Walls/design elements	Reception / Columns
	Interior of Elevator Cab / Elevator Doors				
	Doors and Stalls				
	ATM / Signage Entrance / Curtain Walls	Entrance / Signage	Entrance / Curtain Walls	Entrance / Signage / Drive-thru / Curtain Walls	Entrance / Curtain Walls



Commercial Branding + Transportation
3M Center, Building 223-3N
St. Paul MN 55144-1000 USA

Phone: 1-800-328-3908
Web: 3M.com/AMD

Want
Samples?

Material Bank



Want
Samples?

3M Site



Questions?

www.3M.com/AMD



© 3M 2025. All rights reserved.
3M and DI-NOC are trademarks of 3M.

Please contact your Area or
Global Application Expert for more details.